

Handmade Kitchens of Christchurch Ltd

Catalogue

January 2011.

(short version)

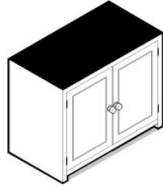
Handmade Kitchens of Christchurch LTD

Tel: 01202 475515
Fax: 01202 366947
Email: sales@handmadekitchens-direct.co.uk
Web: www.handmadekitchens-direct.co.uk

Note: The illustrations in this catalogue are general representations of the cabinets and not scale working drawings. Proportions will change depending on the dimensions you order.



BH1. Base cabinet, 1 door, 1 shelf, Left or right hinged.



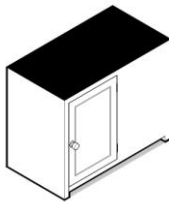
BH2. Base cabinet, 2 doors, 1 shelf.



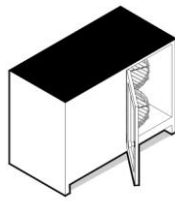
BH3. Base cabinet, L shape corner. 1 shelf. Left or right hinged.



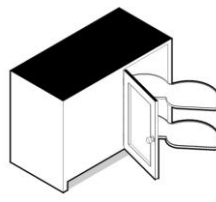
BH4. Base cabinet, L shape corner with carousel. Left or right hinged.



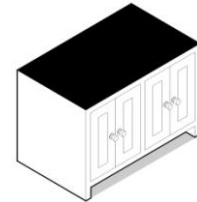
BH5. Base cabinet, corner blank, 1 shelf. 1 door on left or right.



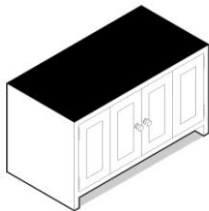
BH6. Base cabinet, corner blank, 1/2 carousel. 1 door on left or right.



BH7. Base cabinet, corner blank. LeMans pull out. 1 door on left or right.



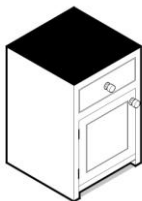
BH8. Base cabinet, window seat, 4 doors.



BH9. Base cabinet, 4 bifold doors. 1 shelf.



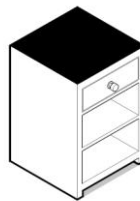
BH10. Base cabinet, 1 door, angled left or right. 1 shelf



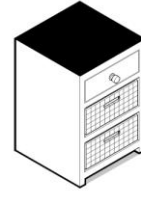
BD1. Base cabinet, 1 drawer, 1 door, 1 shelf. Hinged left or right.



BD2. Base cabinet, 1 drawer, 2 doors, 1 shelf.



BD3. Base cabinet, 1 drawer with open shelf under. 1 shelf.



BD4. Base cabinet, 1 drawer, 2 baskets under. 1 shelf.



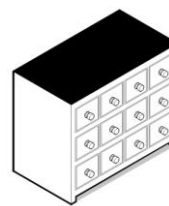
BD5. Base cabinet, 2 drawers, 2 doors, 1 shelf.



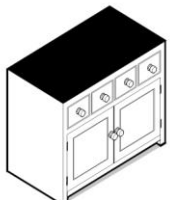
BD6. Base cabinet, 4 drawers.



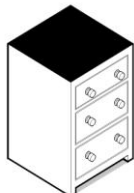
BD7. Base cabinet, 8 drawers.



BD8. Base cabinet, 12 drawers.



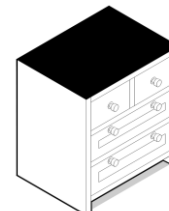
BD9. Base cabinet, 4 drawers, 2 doors, 1 shelf.



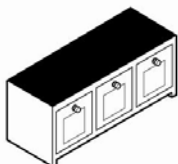
BD10. Base cabinet, pan drawers (1+2 deep).



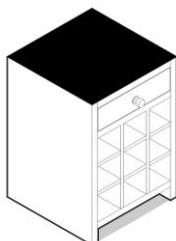
BD11. Base cabinet, pan drawers (2 deep)



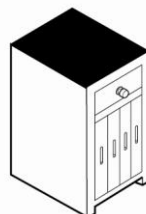
BD12. Base cabinet, pan drawers (2+2 deep)



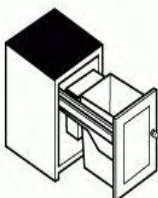
BD13. Base cabinet, window seat, pan drawers



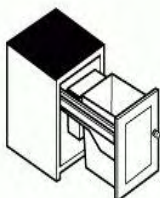
BD14. Base cabinet. 1 drawer, wine rack under.



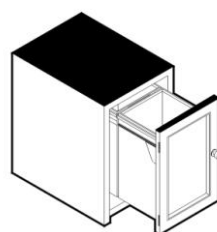
BD15. Base cabinet. 1 drawer, 4 trays under.



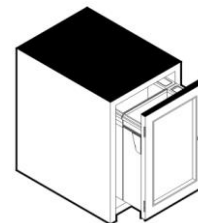
BM1-350. Base cabinet, pull out bin, 1 x 15L + 1 x 10L bins



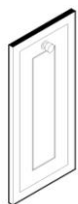
BM1-500. Base cabinet, pull out bins, 2 x 35l bins



BM1-600. Base cabinet, 2 x pull out bins (2 x 35l)



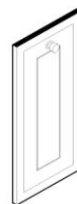
BM1-680. Base cabinet, 4 x pull out waste bins (2 x 35L, 2 x 8.5L).



AH1. Integrated appliance door in a frame. (slimline)



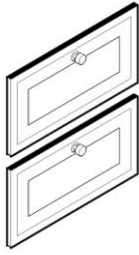
AH2. Integrated appliance door with dummy drawer in a frame. (slimline)



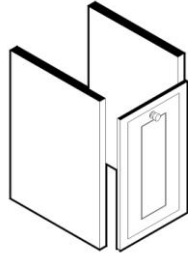
AH3. Integrated appliance door in a frame (full size)



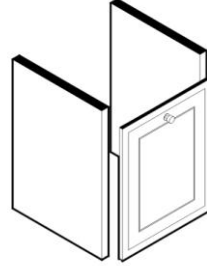
AH4. Integrated appliance door with dummy drawer in a frame. (full size)



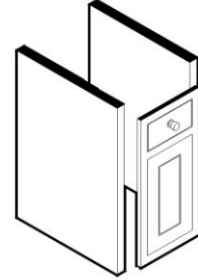
AH6. Integrated appliance drawer x 2



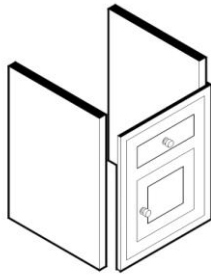
AH7. Integrated appliance housing. (slimline)



AH8. Integrated appliance housing (full size)



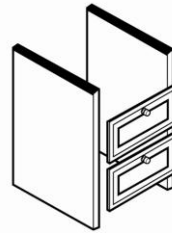
AH9. Integrated appliance housing with dummy drawer (slimline)



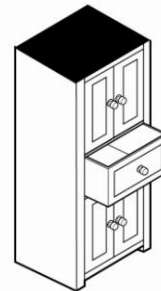
AH10. Integrated appliance housing with dummy drawer (full size)



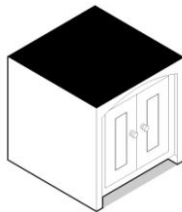
AH11. Integrated single D/Drawer, 2 doors under



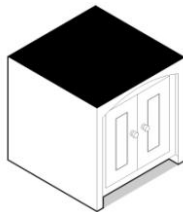
AH12. Integrated Double Dishdrawer Housing



AH13. Integrated tall single Dishdrawer Housing



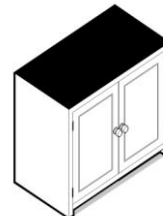
BS1. Base cabinet for Belfast/Farmhouse sink, 2 doors, **curved bridge (not shown)**



BS2. Base cabinet for Belfast/farmhouse sink. 2 doors.



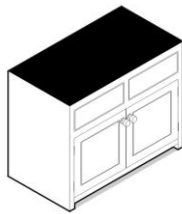
BS3. Base cabinet for inset or undermount sink. 1 door.



BS4. Base cabinet for inset or undermount sink. 2 doors.



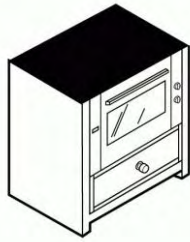
BS5. Base cabinet for inset or undermount sink. 1 door, 1 dummy drawer.



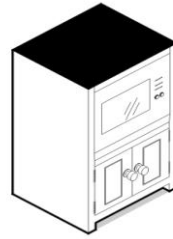
BS6. Base cabinet for inset or undermount sink. 2 doors, 2 dummy drawers



OH1. Base cabinet, built-in single oven housing, pull down tray space below.



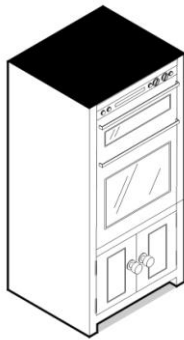
OH1a. Base cabinet, built-in 90mm wide oven housing, 1 drawer under.



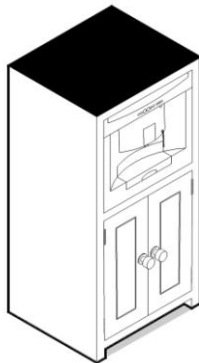
OH2. Base cabinet, integrated microwave housing, 2 doors under.



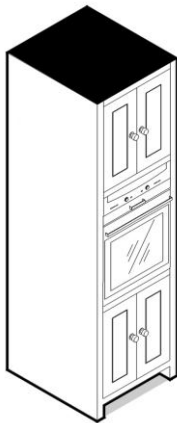
OH3. Base cabinet, freestanding microwave housing, 2 doors under



OH4 Mid cabinet, built-in single oven housing, 2 doors under.



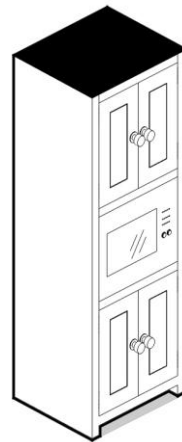
OH5. Mid cabinet. Built-in micro or coffee or steam oven housing, 2 doors under



OH6. Tall built-in single oven housing, 2 doors above and below.



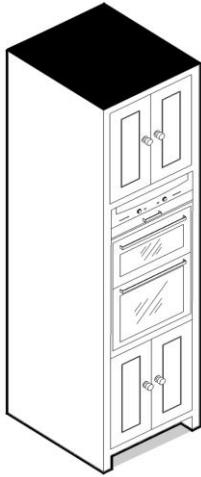
OH7. Tall built-in single oven and micro/coffee/steam oven housing. 1 top hinged door above, 2 doors below.



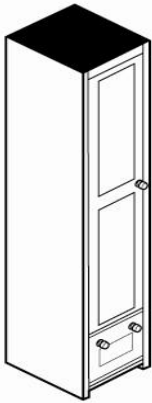
OH8. Tall built-in micro/coffee/steam oven housing. 2 doors above and below.



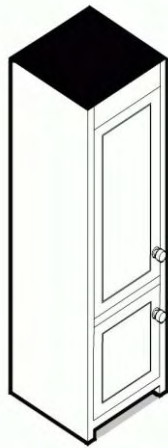
OH9. Tall built-in combination (micro/coffee - micro/steam - coffee/steam) housing. 2 doors above and below.



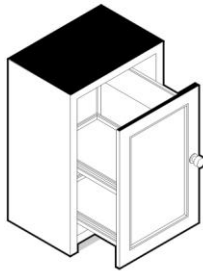
OH10. Tall built-in double oven housing, 2 doors above and below.



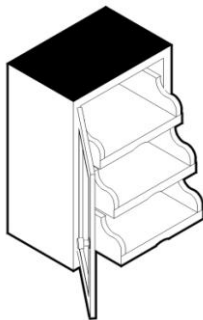
FH1. Tall fridge or freezer housing.



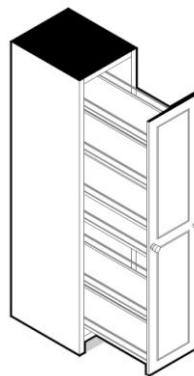
FH2. Tall fridge freezer housing.



LA1. Base cabinet, pull out larder.



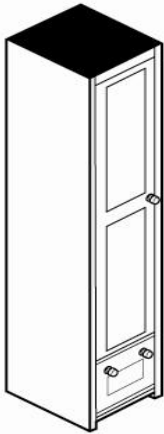
LA2. Base cabinet, 1 door, 3 pull out drawers inside. Left or right hinged.



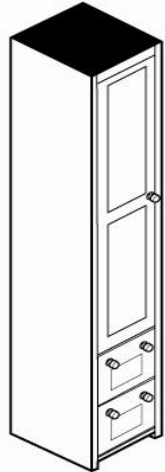
LA3. Tall pull out larder.



LA3a. Mid height pull out larder.



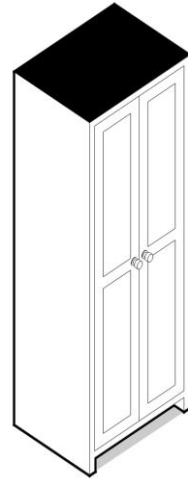
LA4. Tall larder, 1 door, adjustable shelving, 1 pan drawer under. Left or right hinged.



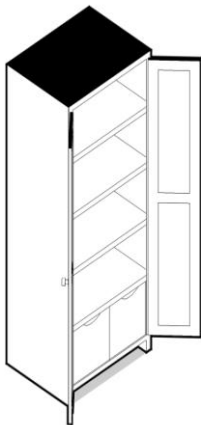
LA5. Tall larder, 1 door, adjustable shelving, 2 pan drawers under. Left or right hinged.



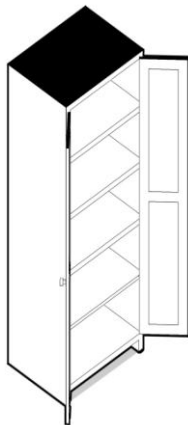
LA6. Tall larder/Broom Cupboard, 1 door, adjustable shelving. Left or right hinged.



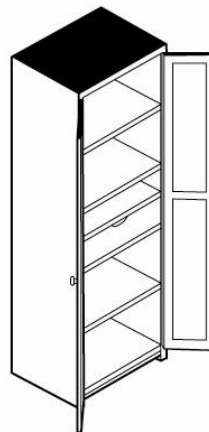
LA7. Tall larder, 2 doors, adjustable shelving.



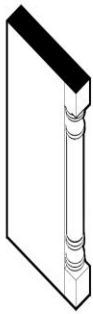
LA12. Tall boot cupboard. 2 doors, adjustable shelves, 2 drawers inside for shoe cleaning materials.



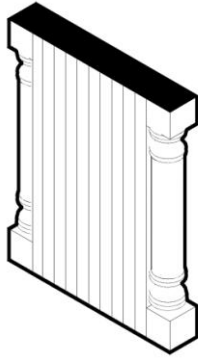
LA13. Tall Linen Cupboard. 2 doors, adjustable slatted shelves.



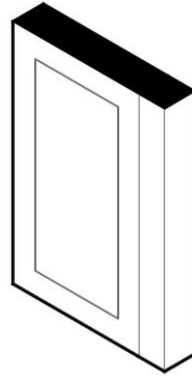
LA14. Tall China Cupboard. 2 doors, adjustable shelving, 1 cutlery drawer inside.



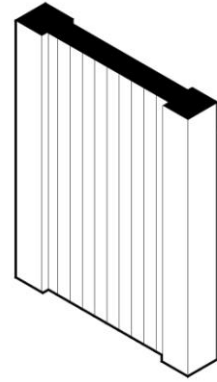
BM14. Pilaster (colonial), panel can be plain or v grooved.



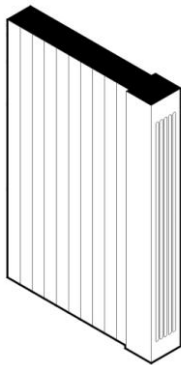
BM15. Island end. (Pilaster, side panel, Pilaster). Panel can be plain or v grooved



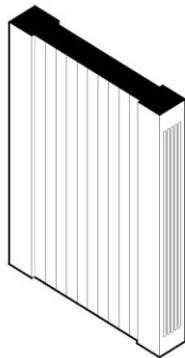
BM16. Post. panel can be plain or v grooved.



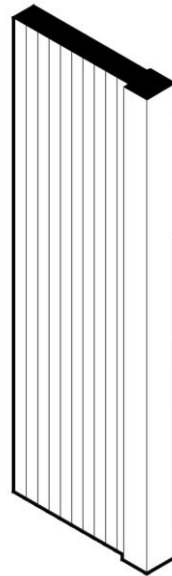
BM17. Island end. (Post, side panel, post). Panel can be plain or v grooved.



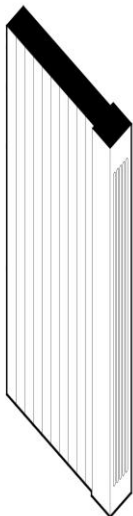
BM18. Post (fluted). Panel can be plain or v grooved.



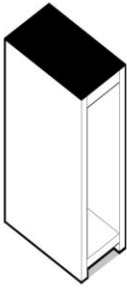
BM19. Island end. (fluted post, side panel, fluted post) Panel can be plain or v grooved.



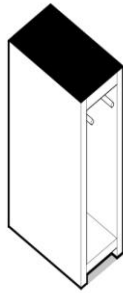
BM21. Tall Post. Panel can be plain or v grooved.



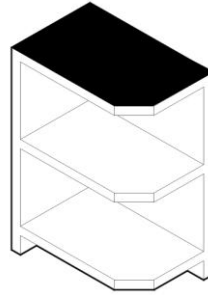
BM22. Tall post (fluted). Panel can be plain or v grooved.



BM3. Base cabinet, tray space.



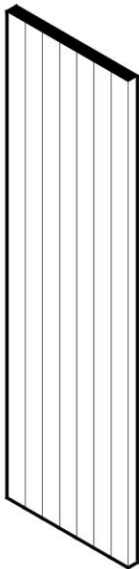
BM4. Base cabinet, towel pull out.



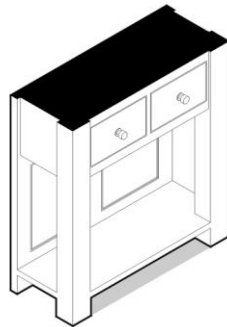
BM5. Base cabinet, angled, open end shelf.



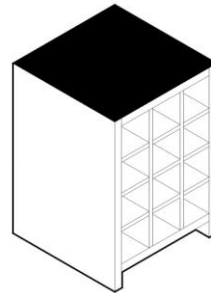
BM7. End panel. Can be plain or v grooved.



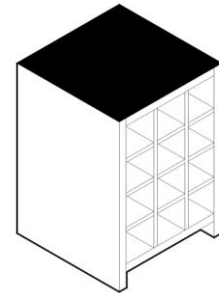
BM8. Tall end panel. Can be plain or , v grooved.



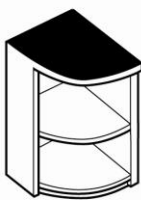
BM9. Island End.



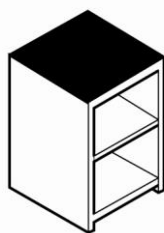
BM10. Base cabinet, wine rack (pigeon holes)



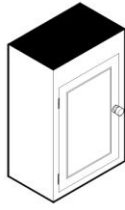
BM10a. Base cabinet, wine rack (pigeon holes)



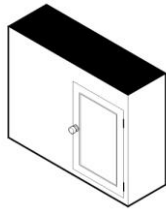
BM23L. Base Cabinet, curved, open shelf.



BM24. Base Cabinet, open shelf.



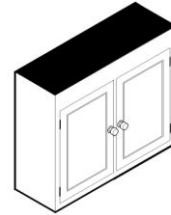
WC1. Wall Cupboard, 1 door, adjustable shelving. Left or right hinged.



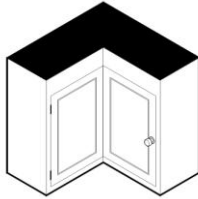
WC2. Wall cupboard, corner blank, 1 door adjustable shelving.



WC3. Wall cupboard, angled, corner, 1 door, adjustable shelving, hinged left or right.



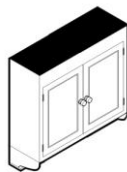
WC4. Wall cupboard, 2 doors, adjustable shelving.



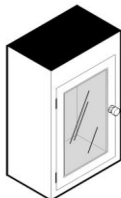
WC5. Wall cupboard, L shape corner, 2 piano hinged doors, adjustable shelving hinged left or right.



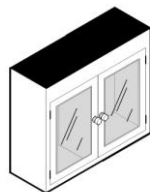
WC6. Wall cupboard with shelf under, 1 door, adjustable shelving. Hinged left or right.



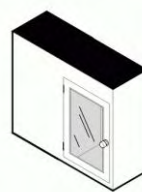
WC7. Wall cupboard with shelf under, 2 doors, adjustable shelving.



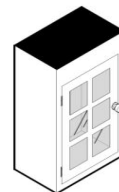
WCG1. Wall cupboard, 1 glazed doors, adjustable shelving. Hinged left or right.



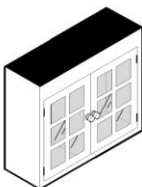
WCG2. Wall cupboard, 2 glazed doors, adjustable shelving.



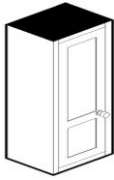
WCG4. Wall cupboard, corner blank, 1 glazed door. Adjustable shelving.



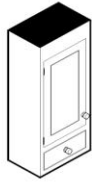
WCG5. Wall cupboard, 1 decorative glazing bar door, adjustable shelving. Hinged left or right.



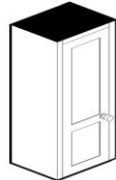
WCG6: Wall cupboard, 2 decorative glazing bar doors, adjustable shelving.



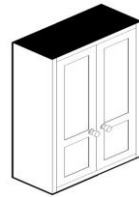
WCL1. Larder top, 1 door, adjustable shelving. Hinged left or right.



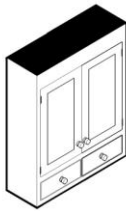
WCL2. Larder top, 1 door, 1 spice drawer under. Adjustable shelving. Hinged left or right.



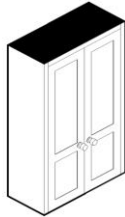
WCL3. Larder top, 1 door, no base or bottom frame. Adjustable shelving. Hinged left or right.



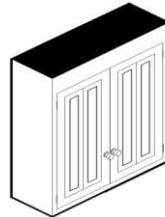
WCL4. Larder top, 2 doors, adjustable shelving. Hinged left or right.



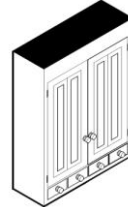
WCL5. Larder top, 2 doors, 2-4 spice drawers under. Adjustable shelving.



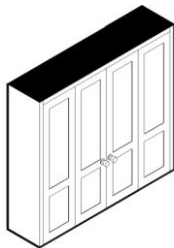
WCL6. Larder top, 2 doors. Adjustable shelving. No base or bottom frame.



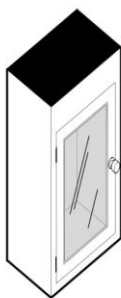
WCL7. Larder top, 4 bifold doors. Adjustable shelving.



WCL8. Larder top, 4 bifold doors, 2-4 spice drawers. Adjustable shelving.



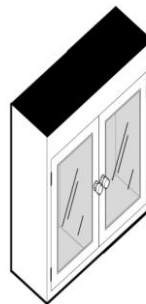
WCL9. Larder top, 4 bifold doors, adjustable shelving, no base or bottom frame.



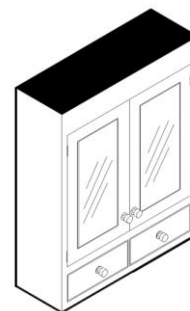
WCD1. Dresser top, 1 glazed door, adjustable shelving, left or right hinged.



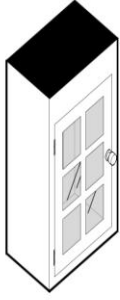
WCD2. Dresser top, 1 glazed door, 1 spice drawer under. Adjustable shelving. Left or right hinged.



WCD3. Dresser top, 2 glazed doors, adjustable shelving.



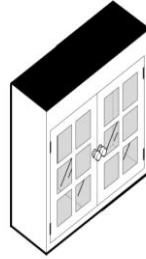
WCD4. Dresser top, 2 glazed doors, 2-4 spice drawers under. Adjustable shelving.



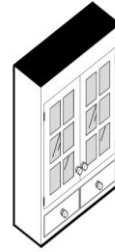
WCD5. Dresser top, 1 decorative glazing bars door. Adjustable shelving. Left or right hinged.



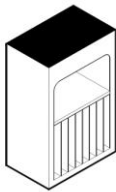
WCD6. Dresser top, 1 decorative glazing bars door, 1 spice drawer under. Adjustable shelving. Left or right hinged.



WCD7. Dresser top, 2 decorative glazing bars doors. Adjustable shelving.



WCD8. Dresser top, 2 decorative glazing bars doors. 2-4 spice drawers under. Adjustable shelving



WCPR1. Plate rack with shelf over. Space for plates 300mm high.



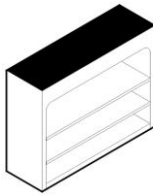
WCPR2. Plate rack with shelf over and shelf under. Space for plates 300mm high.



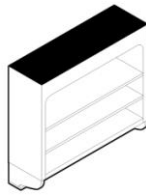
WCPR3. Plate rack with shelf over and spice drawers under. Space for plates 300mm high.



WCPR4. 2 Tier plate rack with shelf over. Bottom tier 300mm high, top tier 250mm high.



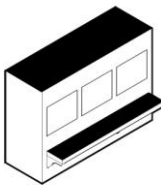
WCOS1. Wall cupboard, open adjustable shelving.



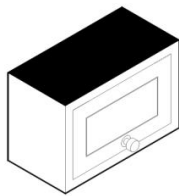
WCOS2. Wall cupboard, open adjustable shelving. Shelf under



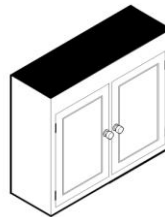
WCOS3. Wall cupboard, open adjustable shelving, spice drawers under.



WCE1. Extractor canopy with panels and shelf.



WCE2. Extractor canopy, 1 door, top hinged.



WCE3. Extractor canopy, 2 doors.



WCE4. Integrated extractor canopy door.



WCE5. Extractor canopy.



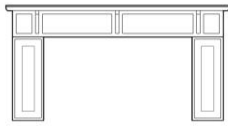
WCM1. Mantle shelf



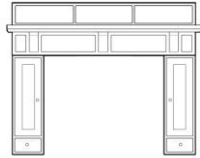
WCM2. Mantle shelf with corniced shelf and corbels



WCM3. 3 Sided mantle plain



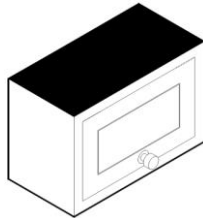
WCM4. 3 sided mantle panelled



WCM10. Full mantle. Panelled with corniced shelf, cupboards and spice drawers.



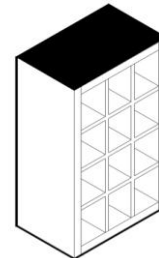
WM1. Flyover



WM2. Fridge top box.



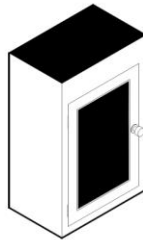
WM3. Integrated microwave housing with 1 door over. Left, right or top hinged.



WM4. Wine Rack. (pigeon holes)

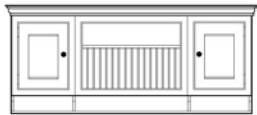


WM5. Open end shelf, angled right.

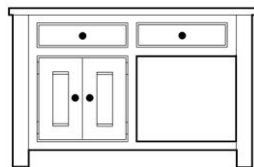


WM8. Blackboard/key cupboard. (20 key hooks.)

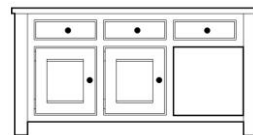
Notes: Islands can also be made up of any combination of fitted base units.



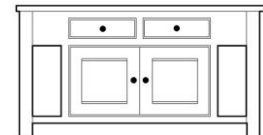
PR1. Plate rack, 2 cupboards and shelf under. Adjustable shelving in cupboards.



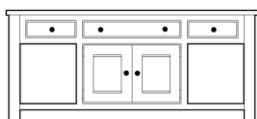
IS1. Island. Double sided, open slatted base on one end.



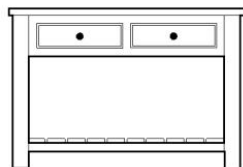
IS2. Island. Double sided, open slatted base on one end..



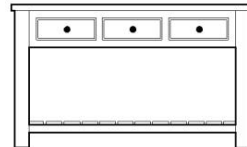
IS3. Island. Double sided, open slatted base both ends.



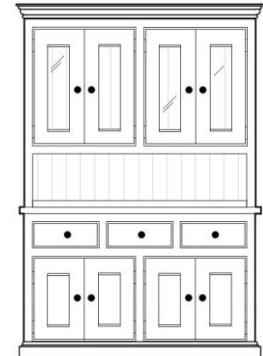
IS4. Island. Double sided, open slatted base both



SV1. Server. Single sided, open slatted base.

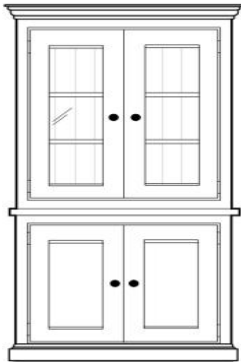


SV2. Server. Single sided, open slatted base.



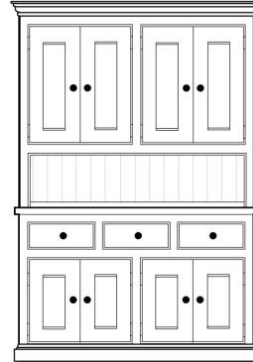
D1. Dresser. Glazed top doors. Adjustable shelving

ends.



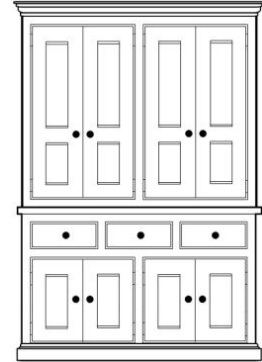
D2. Dresser. 2 glazed doors, adjustable shelving.

D6. No longer available.

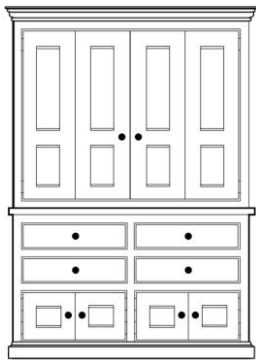


D8. Dresser. Adjustable shelving.

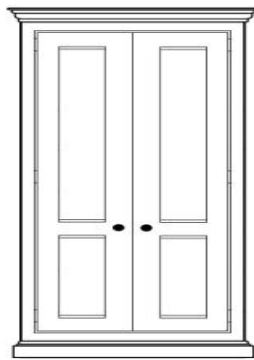
in top.



LR1. Larder. Adjustable shelving.

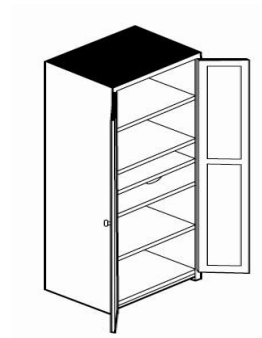


LR3. Larder. Bifold doors. Adjustable shelving.

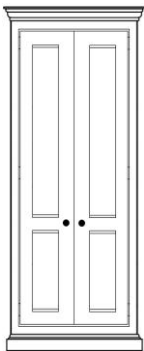


LR4. Larder, 2 door. Adjustable shelving.

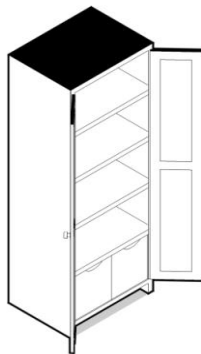
LR5. No longer available



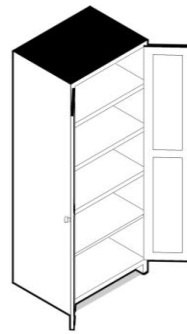
CC1. China Cupboard, 2 door, adjustable shelving, 1 cutlery drawer.



CC2. Coat Cupboard, 2 doors, hanging rail, adjustable shelves.



BC1. Boot Cupboard, Adjustable shelves, 2 drawers for cleaning materials.



LC1. Linen Cupboard, 2 doors, adjustable slatted shelves.